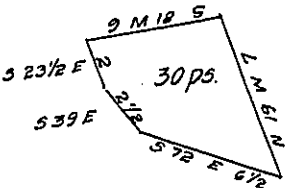


York County Shore.



Lancaster County Shore.

A draught of Mill Island situate in the river Susquehanna in Hempfield township Lancaster County opposite to Stricklers Mill & about one hundred perches from the Lancaster Shore containing thirty perches strict measure surveyed in pursuance of a warrant dated the 13th of August 1814 Granted to Charles Evans & John Dicks.

Jacob Hishman D.S.

To Jacob Spangler Esq.
Surveyor General.

IN TESTIMONY that the above is a copy of the original remaining on file in the Department of Internal Affairs of Pennsylvania, made conformably to an Act of Assembly approved the 16th day of February 1833, I have hereunto set my hand and caused the Seal of said Department to be affixed at Harrisburg, this third day of January 1908

Henry Howell
Secretary of Internal Affairs.